



GO TEAM MEETING #1

September 11, 2025

AGENDA

School Strategic Plan

Strategic Plan & Priorities Review

SMART Goals

Data Discussion

Spring MAP and GMAS

Principal's Report

Current Enrollment & Leveling

Information about our school

APS Forward 2040: Comprehensive Long-Range Facilities Plan

Announcements

Public Comment

Adjournment



2021-2025 STRATEGIC PLAN



ATLANTA
PUBLIC
SCHOOLS

One District. One Goal. Every Child.

Mission: All M. Agnes Jones students (school-wide) in grades pre-kindergarten through fifth grade are engaged in daily rigorous STEAM instruction and exposed to arts and innovative practices to ensure 100% are PROFICIENT or DISTINGUISHED in all core content areas.

M. Agnes Jones Elementary School

SMART Goals

Increase the percentage of students proficient or higher (grades 2-5) on ELA MAP from 22% (Fall 2024) to 25%

Increase the percentage of students proficient or higher (grades 2-5) on MATH MAP from 13% (Fall 2024) to 16%

Increase students' raw score by at least 3% on Write Score exams based on fall and spring administration

Increase the percentage of students not chronically absent from 64.5 to 67.5 or higher

Vision: M. Agnes Jones will provide learning experiences and opportunities where all students possess a strong academic foundation while being motivated to critically think, problem-solve, engage in creativity through the arts and work together collaboratively for the good of themselves, school and community.

APS Strategic Priorities & Initiatives

Fostering Academic Excellence for All

Data
Curriculum & Instruction
Signature Program

Building a Culture of Student Support

Whole Child & Intervention
Personalized Learning

Equipping & Empowering Leaders & Staff

Strategic Staff Support
Equitable Resource Allocation

Creating a System of School Support

Strategic Staff Support
Equitable Resource Allocation

School Strategic Priorities

1. Implement a STEAM-enriched curriculum to drive interdisciplinary and project-based teaching and learning approaches.
2. Use data to drive instruction decisions.

3. Implement a whole-child system of support with integration of SEL to address academic and non-academic performance.
4. Utilize flexible learning tools, technology integration, and targeted instruction to personalize learning for all students.

5. Strengthen staff capacity to support core content knowledge, STEAM, and students' needs.

6. Increase family engagement through positive interactions with school and partnership opportunities.

School Strategies

- 1a. Real life application with STEAM activities (including Pathways of Developmental Success-PODS, clubs, and enrichment programs)
- 2a. Data Team Weekly Grade Level Meetings (Review of MAP, Writescore, GADOE learning plans, phonics/morphology probes, and common assessments) to create and execute reteaching and reevaluation plans.

- 3a. Second step accountability/ one lesson per week
- 3b. Grade-level morning chats led by counselor/grade-level chair
- 3c. The WCI team supports small group/health/behavior interventions
- 3d. Promote attendance and engagement through school initiatives
- 4a. Data analysis of technology integration platforms to provide personalized learning
- 4b. Academic interventions and enrichment technology programs through small group instruction

- 5a. Ongoing PD on GADOE learning plans, Readygen, and FUNdations
- 5b. Grade-level PBL unit presentation to administrative team and partners for feedback before implementation
- 5c. Increase the number of teachers with credentials or certifications for specialized learning strategies, such as gifted, STEAM, math, and leadership certification

- 6a. Streamline communication platforms
- 6b. Interactive Academic Parent Teacher Teams (APTT) PTA, and school-wide meetings to partner with families
- 6c. Maintain a welcoming culture and open-door policy

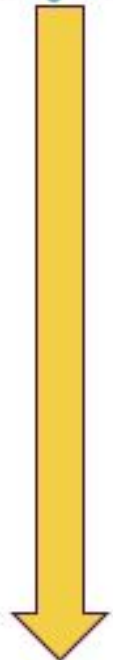


ATLANTA
PUBLIC
SCHOOLS

One District. One Goal. Every Child.

Strategic Plan Priority Ranking

Higher



Lower

1. Implement a STEAM-enriched curriculum
2. Use data to drive instruction
3. Strengthen staff capacity to support content knowledge
4. Implement a whole child system of support with the integration of SEL
5. Utilize flexible learning tools, and technology to integrate targeted instruction
6. Increase family engagement through positive interactions with school and partnerships

CONNECTING THE STRATEGIC PLAN & CONTINUOUS IMPROVEMENT PLAN



Strategic Plan Priority

CIP SMART Goal

Key Indicator

STEAM-enriched curriculum & data to drive instruction (ELA)

By May 2026, 3rd-5th grade students will increase ELA proficiency by 6% from 17% to 23% and decrease beginning learners by 6% from 60% to 54%. Additionally, SWD will increase ELA proficiency by 6% from 3% to 9% and decrease beginning learners by 6% from 88% to 82%.

At least 60% of 3rd-5th grade students will score 75% or above on assessments

Strengthen staff capacity to support core content knowledge (Math)

By May 2026, 3rd-5th grade students will increase Math proficiency by 6% from 13% to 19% and decrease beginning learners by 6% from 54% to 48%. Additionally, SWD will increase Math proficiency by 6% from 6.1% to 12.1% and decrease beginning learners by 6% from 91% to 85

At least 60% of 3rd-5th grade students will score 75% or above on assessments

Implement a whole-child system of support

By May 2026, all students PreK-5 will increase the percentage of students who are not chronically absent by 6% from 66.4% to 72.4%

Increase of ADA attendance
Decrease in the % chronically absent students



DATA DISCUSSION



ATLANTA
PUBLIC
SCHOOLS

One District. One Goal. Every Child.

SPRING MAP: K-2 MATH

MAP: Math

Grade	% HiAvg + (>60th percentile)
KK	48.0
01	53.0
02	21.6

School	Window	Exams					
DISTRICT	Spring 2024-2025	8,040	17%	14%	15%	20%	34%

School	Tested Grade	Window	Exams					
DISTRICT	KK	Spring 2024-2025	2,609	11%	8%	12%	23%	46%
	01	Spring 2024-2025	2,691	16%	15%	14%	21%	35%
	02	Spring 2024-2025	2,740	25%	19%	18%	17%	22%

School	Window	Exams					
Jones	Spring 2024-2025	190	25%	19%	17%	23%	16%

School	Grade	Window	Exams					
Jones	KK	Spring 2024-2025	50	20%	14%	18%	26%	22%
	01	Spring 2024-2025	66	12%	18%	17%	26%	27%
	02	Spring 2024-2025	74	39%	23%	16%	19%	



ATLANTA
PUBLIC
SCHOOLS

One District. One Goal. Every Child.

SPRING MAP: 3-5 MATH

School	Window	Exams				
DISTRICT	Spring 2024-2025	18,163	35%	34%	20%	11%
Jones	Spring 2024-2025	301	51%	35%	12%	
Hutchinson	Spring 2024-2025	183	51%	40%	8%	
Dobbs	Spring 2024-2025	229	55%	35%	9%	
Bunche	Spring 2024-2025	603	52%	34%	8%	6%
H Russell	Spring 2024-2025	309	57%	35%	6%	
Hollis	Spring 2024-2025	450	52%	37%	10%	
Sylvan	Spring 2024-2025	436	53%	39%	6%	
Miles	Spring 2024-2025	316	54%	36%	10%	
Harper-Archer ES	Spring 2024-2025	318	55%	35%	10%	

School	Grade	Window	Exams			
Jones	02	Spring 2024-2025	74	39%	42%	18%
	03	Spring 2024-2025	69	48%	30%	19%
	04	Spring 2024-2025	80	49%	39%	9%
	05	Spring 2024-2025	78	69%	28%	



ATLANTA
PUBLIC
SCHOOLS

One District. One Goal. Every Child.

SPRING MAP: K-2 ELA

MAP: Reading/ELA

Grade	% HiAvg + (>60th percentile)
KK	44.0
01	39.4
02	24.0

School	Window	Exams					
DISTRICT	Spring 2024-2025	8,109	20%	13%	15%	18%	35%

School	Tested Grade	Window	Exams					
DISTRICT	KK	Spring 2024-2025	2,649	10%	13%	15%	19%	43%
	01	Spring 2024-2025	2,711	20%	16%	15%	17%	32%
	02	Spring 2024-2025	2,749	28%	12%	14%	17%	29%

School	Window	Exams					
Jones	Spring 2024-2025	191	25%	20%	20%	17%	17%

School	Grade	Window	Exams					
Jones	KK	Spring 2024-2025	50	14%	24%	18%	24%	20%
	01	Spring 2024-2025	66	21%	15%	24%	21%	18%
	02	Spring 2024-2025	75	35%	23%	19%	9%	15%



ATLANTA
PUBLIC
SCHOOLS

One District. One Goal. Every Child.

SPRING MAP: 3-5 ELA

School	Window	Exams				
DISTRICT	Spring 2024-2025	18,163	35%	34%	20%	11%

School	Window	Exams	51%	32%	14%	5%
Jones	Spring 2024-2025	299	51%	32%	14%	5%
Kimberly	Spring 2024-2025	165	52%	27%	16%	5%
Miles	Spring 2024-2025	315	50%	32%	16%	2%
Bunche	Spring 2024-2025	595	49%	29%	18%	4%
FL Stanton	Spring 2024-2025	122	53%	28%	12%	7%
Cleveland	Spring 2024-2025	159	51%	36%	9%	4%
Boyd	Spring 2024-2025	249	48%	34%	16%	2%
Long	Spring 2024-2025	593	49%	36%	13%	2%
Dobbs	Spring 2024-2025	229	52%	30%	15%	3%
Peyton Forest	Spring 2024-2025	182	51%	36%	12%	1%
Heritage	Spring 2024-2025	247	53%	29%	13%	4%
Scott	Spring 2024-2025	198	49%	29%	20%	2%
H Russell	Spring 2024-2025	311	56%	27%	14%	3%

School	Grade	Window	Exams	45%	35%	13%	7%
Jones	02	Spring 2024-2025	75	45%	35%	13%	7%
	03	Spring 2024-2025	67	57%	25%	16%	2%
	04	Spring 2024-2025	79	54%	32%	10%	4%
	05	Spring 2024-2025	78	46%	35%	18%	1%



ATLANTA
PUBLIC
SCHOOLS

One District. One Goal. Every Child.

SPRING MAP RESULTS:

School	Window	Exams					
DISTRICT	Spring 2022-2023	265	49%				
	Spring 2023-2024	5,782	36%				
	Spring 2024-2025	5,045	28%				

School	Grade	Window	Exams					
Jones	05	Spring 2022-2023	63	43%				
		Spring 2023-2024	69	46%				
		Spring 2024-2025	77	42%				



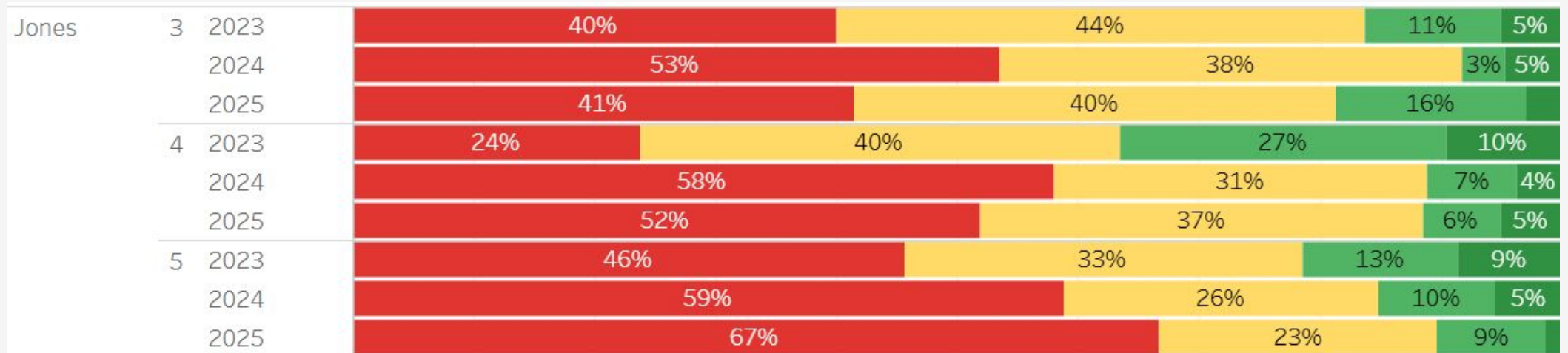
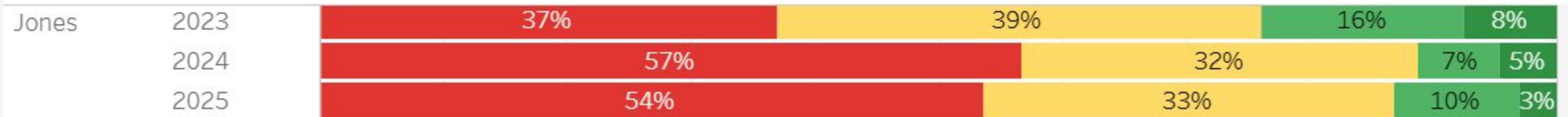
ATLANTA
PUBLIC
SCHOOLS

One District. One Goal. Every Child.

GMAS RESULTS- MATH

Milestone Comparison

Click School Name or Year to show results by Grade-Level.



ATLANTA
PUBLIC
SCHOOLS

One District. One Goal. Every Child.

GMAS RESULTS- MATH/SCIENCE DOMAINS

Milestones Domain Comparison: Tested Students

Select a domain to bring up a list of students and their domain performance.

			3	4	5
Math	Geometric & Spatial Reasoning	2025	37%	38%	
	Geometric & Spatial Reasoning: Po..	2025			13%
	Measurement & Data Reasoning: L..	2025	31%		
	Measurement & Data Reasoning: ..	2025			23%
	Measurement & Data Reasoning: T..	2025		32%	
	Numerical Reasoning	2025	24%	16%	19%
	Numerical Reasoning: Addition an..	2025		33%	
	Numerical Reasoning: Addition an..	2025		23%	
	Numerical Reasoning: Compare an..	2025		32%	
	Numerical Reasoning: Connection ..	2025		22%	
	Numerical Reasoning: Multiplicati..	2025			17%
	Numerical Reasoning: Operations ..	2025			21%
	Numerical Reasoning: Place Value ..	2025			21%
	Numerical Reasoning: Place Value ..	2025	49%		
	Numerical Reasoning: Represent F..	2025	30%		
	Patterning & Algebraic Reasoning	2025	29%		
	Patterning & Algebraic Reasoning:..	2025	39%		
	Patterning & Algebraic Reasoning:..	2025	33%		
	Patterning & Algebraic Reasoning:..	2025		28%	
	Patterning & Algebraic Reasoning:..	2025			33%
Sci	Earth Science	2025			27%
	Life Science	2025			24%
	Physical Science	2025			15%



ATLANTA
PUBLIC
SCHOOLS

One District. One Goal. Every Child.

GMAS RESULTS- ELA

Milestone Comparison

Click School Name or Year to show results by Grade-Level.

District	2023	39%	27%	23%	10%
	2024	38%	26%	24%	12%
	2025	37%	27%	23%	13%

Jones	2023	49%	31%	15%	5%
	2024	60%	23%	14%	
	2025	57%	26%	13%	4%

Jones	3	2023	64%	24%	10%	
		2024	69%	16%	12%	3%
		2025	63%	24%	9%	4%
	4	2023	43%	25%	22%	10%
		2024	62%	26%	12%	
		2025	62%	23%	11%	4%
	5	2023	39%	43%	16%	
		2024	49%	27%	19%	4%
		2025	46%	31%	19%	4%

GMAS RESULTS- ELA DOMAINS

Milestones Domain Comparison: Tested Students

Select a domain to bring up a list of students and their domain performance.

				3	4	5
Jones	ELA	Craft and Structure/Integration of..	2025	39%	29%	40%
		Key Ideas and Details	2025	21%	23%	31%
		Language	2025	26%	23%	31%
		Reading and Vocabulary	2025	17%	24%	27%
		Reading Informational Text	2025	29%	32%	31%
		Reading Literary Text	2025	17%	19%	31%
		Reading Status	2025	34%	33%	45%
		Vocabulary Acquisition and Use	2025	30%	30%	44%
		Writing	2025	29%	19%	42%
		Writing and Language	2025	24%	15%	32%

Writing Domain Comparison: Tested Students

Writing domain trait 1 and narrative follow a 0-4 point scale, while trait 2 scales from 0-3. Writing rubrics are different from other Milestone domain scales.

				3	4	5
Jones		Informational/Explanatory Trait 1	2025	20%	16%	82%
		Informational/Explanatory Trait 2	2025	7%	28%	88%
		Narrative	2025	14%	37%	68%
		Opinion Trait 1	2025	38%	47%	43%
		Opinion Trait 2	2025	28%	42%	41%

GMAS RESULTS- SCIENCE

Milestone Comparison

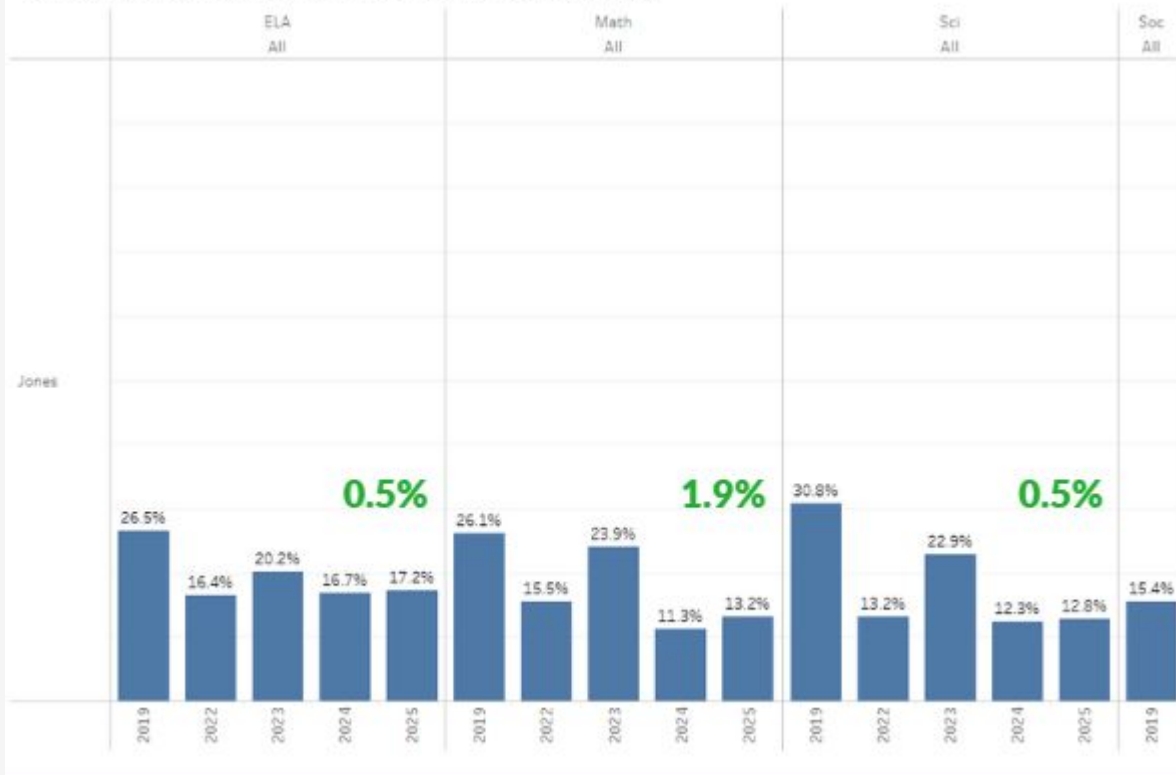
Click School Name or Year to show results by Grade-Level.

District	2023	49%	23%	19%	9%
	2024	51%	21%	19%	9%
	2025	43%	23%	21%	12%

Jones	5	2023	44%	33%	17%	6%
		2024	75%	12%	12%	
		2025	64%	23%	10%	

COMPARISON RESULTS

Year by Year Comparison (Proficient and Above): Jones



Year by Year Comparison (Developing and Above): Jones



ATLANTA
PUBLIC
SCHOOLS

One District. One Goal. Every Child.

SUBGROUP COMPARISON RESULTS

School: Jones

Grade	Test and Window	ELA/Reading	Math
All	Fall 2024-2025 MAP	21%	12%
	Spring 2024-2025 MAP	17%	12%
	2025 GMAS	17%	13%
	Fall 2025-2026 MAP	20%	17%
SWD	Fall 2024-2025 MAP	0%	0%
	Spring 2024-2025 MAP	0%	3%
	2025 GMAS	3%	6%
	Fall 2025-2026 MAP	0%	9%
Black or African American	Fall 2024-2025 MAP	20%	10%
	Spring 2024-2025 MAP	15%	10%
	2025 GMAS	15%	12%
	Fall 2025-2026 MAP	18%	17%



GLOWS & GROWS

GLOWS

- 1st grade had high growth in math (Spring 2025)
- .5% increase in ELA proficiency from 23-24 to 24-25 SY
- .5% increase in SCIENCE proficiency from 23-24 to 24-25 SY
- 1.5% increase in MATH proficiency from 23-24 to 24-25 SY
- 3% increase in subgroup data (DEE) in math/ELA from Spring Map to 24-25 Milestones
- Decrease of beginning learners in ELA, MATH, & SCIENCE

GROWS

- Overall proficiency in ALL areas
- Decrease in ELA proficiency across the same year (Fall '24 MAP to Spring '25 GMAS)
- Low proficiency/growth in 2nd grade (current 3rd grade) in both ELA and Math
- Writing, Vocabulary and Literary Text Domains
- Numerical Reasoning across all grades

IMPACT

**ARE WE ON TARGET TO
SUCCESSFULLY ACCOMPLISH
OUR PRIORITIES?**

GO TEAM DISCUSSION: DATA PROTOCOL

- What do you notice?
- What are your wonderings?
- Based on our school's trend data from MAP assessments and end-of-year test assessments, which student sub-groups and grade levels showed the most significant gaps or unexpected trends?
- Based on our school's trend data from MAP assessments, Milestones and other indicators, are there specific trends that require more focused attention?
- What additional questions do you have?



Timeline for GO Teams

You are **HERE**



1

Fall 2021

GO Team Developed
2021-2025 Strategic Plan

2

Summer

School Leadership
completed Needs
Assessment and defined
overarching needs

3

August

School Leadership
completed Continuous
Improvement Plan

4

Sept. – Dec.

GO Team reviews progress
on current strategic plan.

**GO Team develops
2025-2030 School Strategic
Plan**

5

Before Winter Break

GO Team will take action
(vote) on the rank of the
strategic plan priorities
for SY26-27 in
preparation for budget
discussions.

QUESTIONS ?

PRINCIPAL'S REPORT




ATLANTA
PUBLIC
SCHOOLS

One District. One Goal. Every Child.

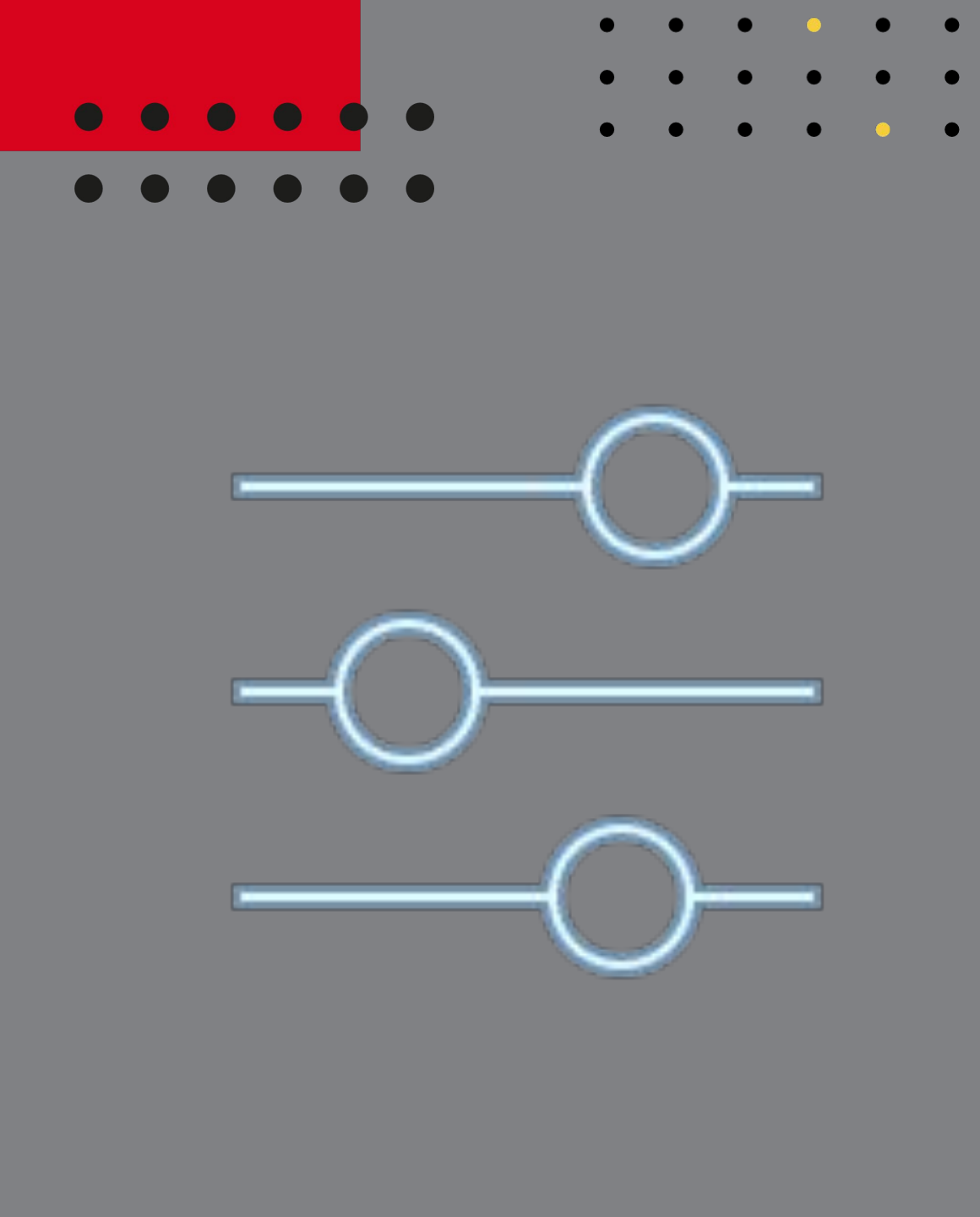


M. Agnes Jones ES

LEVELING AND FY26 BUDGET ADJUSTMENT



**Template Last
Revised: 9/4/2025**



Enrollment

Projected Enrollment	433
15-Day Count(08.22.25) Enrollment	387
Difference	-46

Current Enrollment: 399

Budget Adjustment* *\$-274,252*

26

*The budget adjustment reflects the impact of the following: Enrollment changes, school reserves, Title I Part A, Title I- Family Engagement

HOLD HARMLESS

To support academic stability in schools, budgets were not reduced beyond school reserves.

PLAN FOR FY26 LEVELING RESERVE

\$106,176

Priorities	Strategies	Requests	Amount
Data-Driven Instruction/ Targeted Instruction	Targeted interventions	Purchase (1) additional teacher tutor	\$27, 720
Use Flexible learning tools & technology to target instruction	Technology Resources for personalized learning	IXL & other web-based applications, headphones	\$50,000
STEAM Enriched Curriculum	Professional Learning	STEAM team to PBL world/ other STEAM PL	\$28,456

PLAN FOR FY26 TITLE I HOLDBACK

\$27,878

Priorities	Strategies	Requests	Amount
Data-Driven Instruction/ Targeted Instruction	Targeted interventions	Purchase (1) additional teacher tutor	\$27, 720

APS Forward 2040: Reshaping the Future of Education

Taskforce Meetings

May 8, 2025 - Presentation

August 5, 2025- Presentation

Upcoming Public Meetings

- October 20
- November 10

Virtual – at Noon

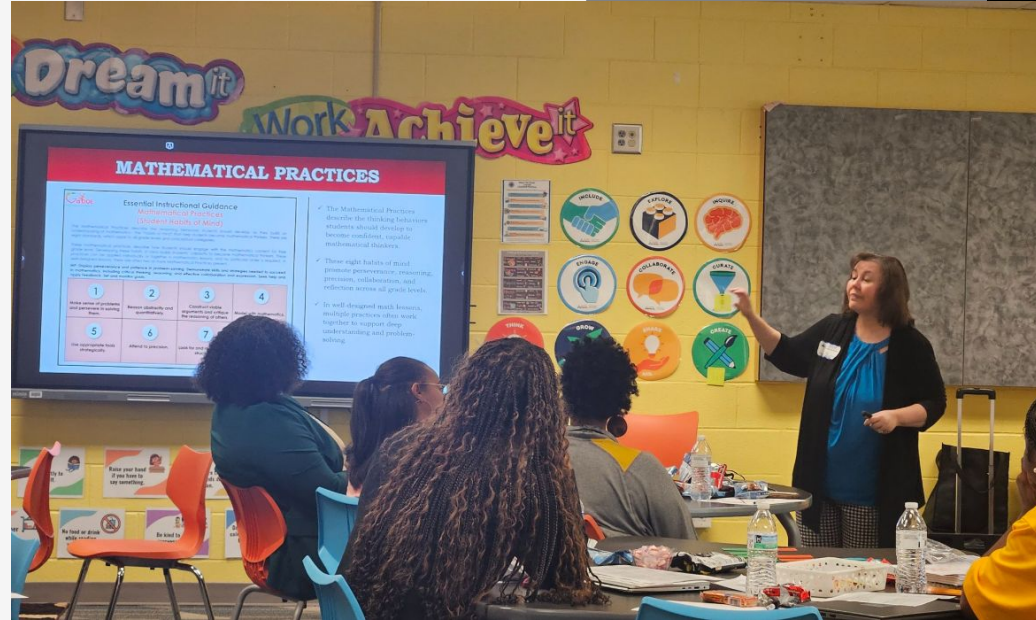
In-person at 6PM at CLL (130 Trinity Ave)

Comprehensive Long-Range Facilities Plan

atlantapublicschools.us/APS2040

INFORMATION ABOUT OUR SCHOOL

Professional Learning



3 Metro RESA Math Trainings

3 Metro RESA ELA (Writing) Trainings

(5) staff attending Readers League Training in October

(3) staff attending STEAM Forum in October



IN-PERSON

Bring the full GO Team

Come ready to collaborate, contribute, and
create the future!

Come learn more about:

- Your school's 2025–2030 Strategic Plan
- Stakeholder Engagement
- APS Forward 2040

...and much more



SAVE THE DATE

G3 Summit

Go.Grow.Govern.

Saturday

September 27

8:30 AM – 2:30 PM



Announcements

- A. 9/24 Science Fair Launch Night (3-4 pm)
- B. 9/25 Picture Day
- C. 9/26 EOM Celebration/ PTA Skate Night
- D. 9/29-10/3 Parent Teacher Conferences
- E. 10/3 Writing Publishing Party (1-2 pm)





QUESTIONS?



M. Agnes Jones Elementary School
GO Team Public Comment Protocol

GO Team Public Comment Protocol

- Public comments will be held during the last 20 minutes of each GO Team meeting, from 4:55 p.m. to 5:15 p.m.
- Public comment opportunities will be available at the September, November, January, and February meetings.
- Meetings that include public comments will be announced on the school website, through a calling post, and with a posted meeting notification flyer.

Sign-Up Process:

- Community members who wish to speak must sign up by 3:00 p.m. on the day of the meeting.
- The public comment sign-up form will be available from the time the meeting is announced until the 3:00 p.m. deadline.
- Participants may register using the link provided: [GO Team Public Comment Sign-up](https://tinyurl.com/MAJComment) (<https://tinyurl.com/MAJComment>)
- Registered speakers will receive the Zoom link via email by 3:30 p.m. on the day of the meeting.

Comment Guidelines:

- A total of 20 minutes is reserved for public comments. The time for each speaker will depend on the number of participants who sign up.
- The principal will serve as the timekeeper.
- All comments will be documented and thoughtfully considered in future planning.

Public Comment

If you would like for your question or comment to be read by GO Team members please record it below.

2 responses

I would like to speak as a parent for the facilities task force.

Yes. Can we have a monthly update on status of GADOE REcertification? Such as where we are on achievement, what's been complete, what's outstanding, any meetings, etc?